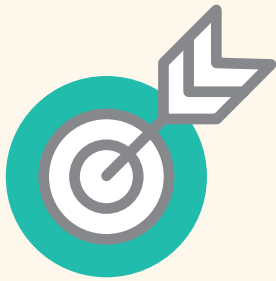




YOUR BEST BUSINESS PARTNER @TAIWAN

From E-commerce to Offline Retail, We Provide you An One-Stop Service
Presented By Fine Wow Inc.



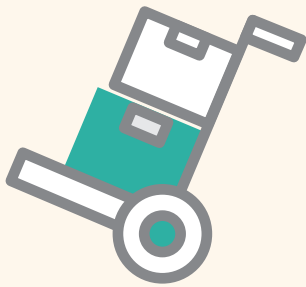
Annual Sales Plan



FDA Taiwan Approval



Import Assistant



Order &
Shipping Processing



Customer Service



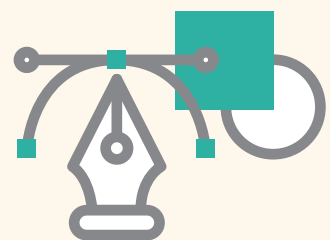
Sales Report &
Recommendation



Sales Channel
Coordinator

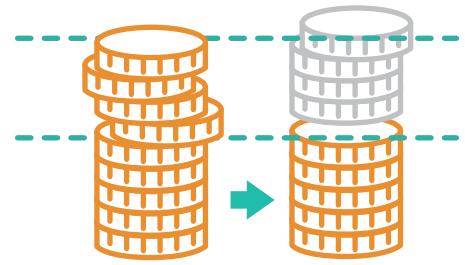


Social Media
Assistance



Graphic Design

WHY CHOOSE FINE WOW INC.?



1 Low Costs

In order to expand business overseas, normally establishing a branch company in the country that you expect to expand your business to is a must. However, establishing a company overseas is costly because the costs include manpower, office rental and warehouse rental.

Not to mention that there is no business connections in the new market. Everything needs to start from the ground zero. A waste of time can also be considered a different type of huge cost.

Through Fine Wow, with our assistance, you will be able to quickly enter and start doing business in the new market at only a reasonable cost. Moreover, if once you decide to enter the market by yourself after termination of contract, we will assist you in transit of the contracts with the distribution channels and the inventory. We like to see us as a business assistant. The goal of the client is our priority.

2 Experiences and Professions

Fine Wow has been in cosmetics market for over 5 years. We specialize in selling Korean cosmetics both online and offline. About online distribution channels, we are very close to MoMo, Etmall, and Shopee. About offline distribution channels, we have great connections with Tomod's, MatsumotoKiyoshi and Sapporo Drug Store.

Other than that, with our over 5 years experience, we are capable of doing market research and developing a yearly customized business plan. We also have done the applications of FDA Taiwan many times before, and we are able to provide legal advice regarding your products.

We also have our own warehouse to process the orders and shipping. Our marketing team will assist you in advertising plan regarding social media, online media, bloggers, and Google ads.

Unlike other service provider, we would very like to grow and walk on the path of success with our clients. Therefore, we will routinely collect and analyze information from the distribution channels and key players in the industry so we can help our clients adjust the sales strategy and quickly respond to market and consumer changes.

Service Chart

The Enterprise

Decision Making

- Meetings
- Sales proposal
- Products ingredients check
- Products and pricing
- Sales schedule
- Promotion plan

Document Preparation

- Product page and banner design
- Establish logistics
- Product label preparation
- FDA Approval application
- Products shipped to Taiwan

Products Shipping

- Advertising plan
- Getting promotion supports from the distribution channels

Start Selling

Reviews

- Reviews on sales and advertisements
- Sales recommendation report

Sales Plan
Weeks

Distribution Channels preparation
2 weeks

Making adjustments to respond market
Continue selling

Three Ways to Enter A New market

	Pros	Cons
Oversea EC (Inventory in Korea)	<p>The enterprise has a better control on the inventory.</p> <p>The enterprise can quickly start the oversea business.</p> <p>The enterprise is possibly able to sell products that are limited by the Custom.</p>	<p>Consumers have less payment options.</p> <p>The shipping is high.</p> <p>It is difficult to deal with customer return issues.</p>
Establishing Branch Company (Inventory in Taiwan)	<p>The enterprise has more control of its inventory, operations and strategy.</p>	<p>The enterprise has to pay rents, manpower, and deal with logistics.</p> <p>If the branch company does not do well, it is costly when the company decides to close the branch.</p> <p>The enterprise has to deal with the legal issue and the complicated tax issues with its parent company.</p>
Working with Fine Wow (Inventory in Taiwan)	<p>The cost is lower than establishing a branch company.</p> <p>Fine Wow deals with all the logistics, distribution channels, legal issues, customer service.</p> <p>Fine Wow has existing connections and resources to help the company quickly start selling products.</p>	<p>The enterprise has to pay service fee to Fine Wow.</p> <p>When the enterprise decides to end the contract, all the inventory must go back to the company.</p>

About Fine Wow Inc.

Year of establishment

2013

Registered Capital

20,000,000 NTD

Main Business

Selling Korean cosmetics online and offline

Official Website

www.misshan.com.tw

E-commerce platforms

Momo, ETmall, Friday, Yahoo Shopping Mall, UDN, S3, 86 Shop and Shopee

Beauty & drug stores

Tomod's, Sapporo Drug Stores and MatsumotoKiyshi
